

DISTRIBUTION TRANSFORMERS

11 000/420 Volt Three Phase



Approximate Dimensions:

Length: 2 100mm
 Width: 2 103mm
 Height: 1 600mm

Example of the Rating Plate:

ACTOM			
LVD DISTRIBUTION TRANSFORMERS			
KVA	200	VOLTS HV/LV	22000 410
PHASE	3	AMPERES	225 278
IMPEDANCE	400	WINDINGS HV/LV	AL AL
FREQUENCY	50 HZ	COOLING	UN/AN
SERIAL NO.	L0001009	YEAR & MONTH OF MANUF.	2018/02
ORDER NO.	1115927	CORE & WINDINGS	450
CUSTOMER	ACTOM ELEC PRODUCTS	TOTAL MASS	146
SAP No.		CR.	247

MANUFACTURED IN ACCORDANCE WITH
 FAKOM APPLICATION 34.346 87 P.6
 OIL CONTAINS NO TRACE OF PCB'S
 VENTILATE TANK INTERIOR
 BEFORE REMOVING PRESSURE
 COVER
 TO REF P18 LFDI UNDFR P18 L VACUUM
 TERMINAL BARRIERS

H.V.	SWITCH POSITION
106	1
103	2
100	3
97	4
94	5

VECTOR SYMBOL
 Dyn 11

SANS 780 27033

Typical Data:

Transformer For Industrial Applications:
Manufactured and Tested The Design SANS IEC 613781 standard
 Will ensure that the unit will withstand the typically high electrical stresses

The Large Robust Radiators Quickly dissipate any heat created by extra losses that are normally caused by "Eddy" currents

Short Circuit Tested to SANS 780-IEC 60076-5 and Eskom specific 34-346

Customise with Accessories Please contact us for a full list of accessories

Product Data:

Rating 1 000 - 3 150 KVA
Voltage 420 V
Impedance 5% - 9%
Number of Phases Three

DISTRIBUTION TRANSFORMERS

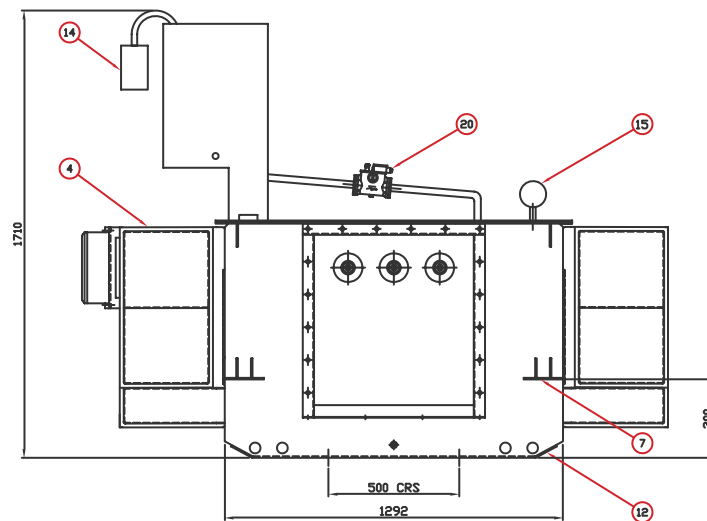
11 000/420 Volt Three Phase

General Third Angle Projection (Scale 1:10)

14. Silica Gel Breather
(Required=Yes)

20. Buchholtz Relay
(Required=Yes)

4. Radiators
(1 600mm wide)
(Required=Yes)



15. Thermometer and Contacts
(Required=Yes)

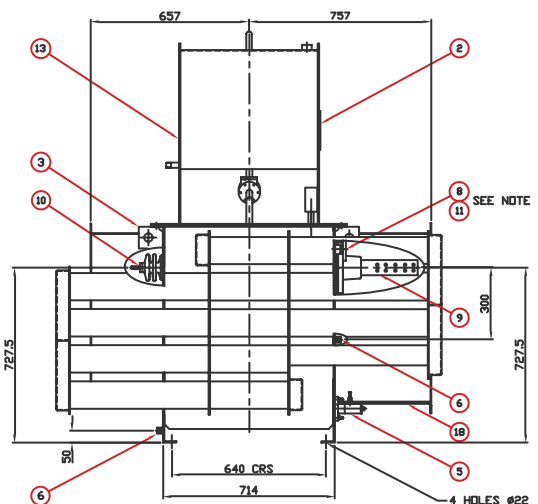
7. Jacking Pads
(Required=Yes)

12. Skid Base
(Required=Yes)

13. Conservator
(Required=Yes)

3. Lifting Lugs
(Required=Yes)

10. HV Bushings (SM 250)
(Required=Yes)



2. Prismatic Oil Gauge
(Required=Yes)

8. Tapswitch Handle
(Required=Yes)

11. S/Steel Rating and Diagram Plate
(Required=Yes)

9. LV Bushings (RQL 2 300)
(Required=Yes)

6. Earth Boss (2 OFF)
(Required=Yes)

18. LV Aluminium Gland Plate
(Required=Yes)

5. Drain Valve and Plug
(Required=Yes)

Oil Litres 698 LT

Core & Wind Mass 1 255 KG

Total Mass 2 890 KG

Additional Information:

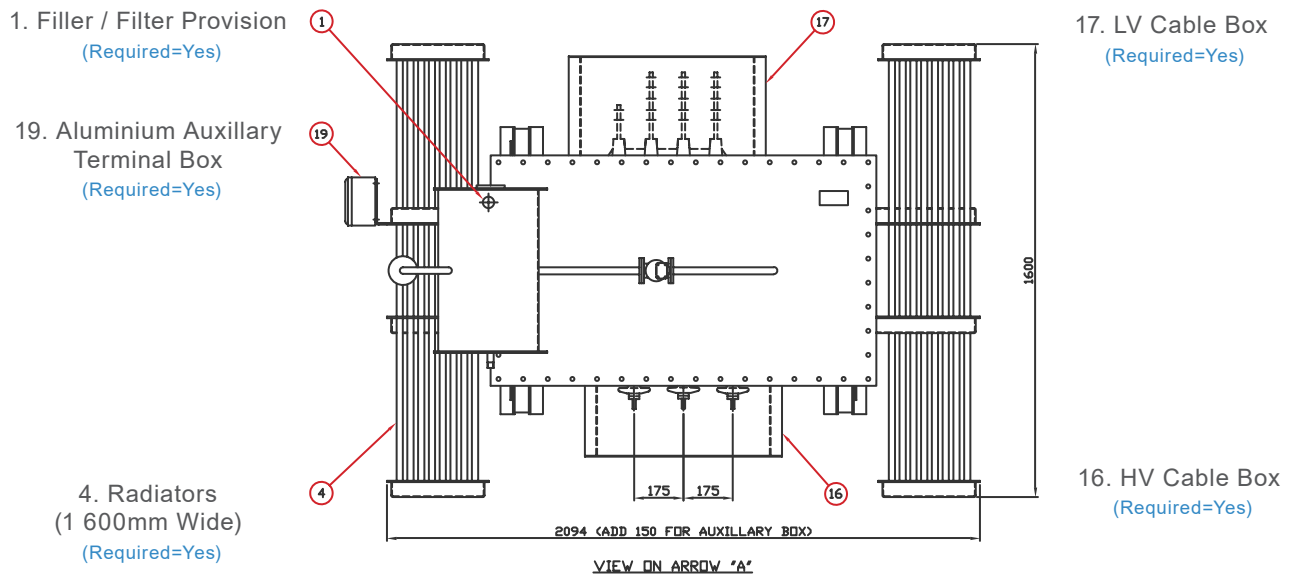
1. Rating Plate to be Positioned Below Tapswitch Handle
2. Impedance = SANS 780
3. Voltage Stated is Off-Load Voltage

Address: 4 Branch Road, Germiston 1401, P.O. Box 678, Germiston 1400

DISTRIBUTION TRANSFORMERS

11 000/420 Volt Three Phase

General Third Angle Projection (Scale 1:10)



Product Information:

Rated Power	No Loss Watts	Full Load Loss Watts	Impedance (%)	Length (mm)	Width (mm)	Height (mm)	Oil Volume (Litres)	Total Mass (kg)
1 000	1 900	9 500	5	2 100	2 103	1 600	700	3 030
1 250	2 300	11 000	5	2 450	2 100	1 600	661	3 183
1 600	2 750	13 500	6.5	2 714	2 100	1 600	661	3 400
2 000	3 250	16 000	8	3 146	2 400	1 800	930	4 200
2 500	3 800	22 000	9	3 546	2 400	1 900	1 030	4 975
3 150	4 500	26 500	9	3 900	2 400	1 900	1 200	5 700

Address: 4 Branch Road, Germiston 1401, P.O. Box 678, Germiston 1400

Complete your Project:

Please select the items you require and we will be in touch

Cables and Wires:

Indoor
Outdoor
General
Other
Let an ACTOM
Specialist Contact you

Lighting:

Indoor
Outdoor
General
Other
Let an ACTOM
Specialist Contact you

Transformers (Distribution):

Indoor
Outdoor
General
Other
Let an ACTOM
Specialist Contact you

Accessories:

Indoor
Outdoor
General
Other
Let an ACTOM
Specialist Contact you

Specific Information:

Address: 4 Branch Road, Germiston 1401, P.O. Box 678, Germiston 1400

For more Information on this Product Please Send us the Following

Product Information:

Product Name:

Quantity:

Project Name:

Date the Product is required:

Your Contact Information:

Name and Surname:

Company:

Email:

Phone Number:

Province:

Thank You

For having a Look at this Product

Please send this PDF back to us with all your Information

Scan the QR Code to visit our Website:

